



I-66 Interchange: Capital Beltway HOT Lanes

Rebuilding major interchange to improve travel flow and connectivity

As part of the Capital Beltway HOT Lanes Project, the Virginia Department of Transportation (VDOT) and Fluor-Transurban are rebuilding the I-66/I-495 interchange.

MAJOR IMPROVEMENTS:

Brand New Infrastructure

The project will replace over \$260 million dollars worth of aging infrastructure along the 14-mile project alignment. At I-66, ten new bridges will be built to accommodate the four new HOT Lanes on the Beltway.

Seamless HOV Connection

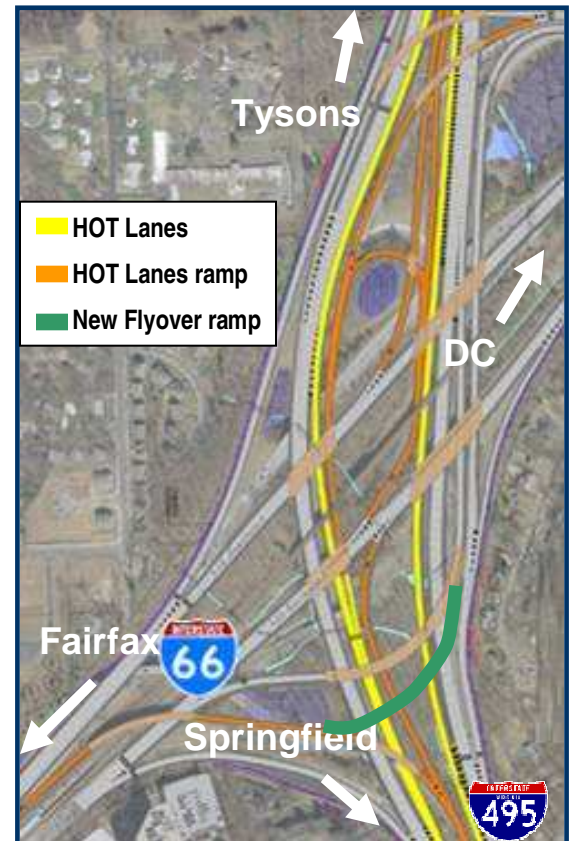
The Capital Beltway HOT Lanes will provide a seamless connection with the HOV lanes on I-66. Carpoolers traveling on these interstates will have dedicated ramps and lanes to merge onto the connecting HOV lanes.

New Flyover Ramp to Tysons

A new flyover ramp will be built for the I-66 East general purpose lanes to I-495 North with an extended auxiliary lane all the way to Tysons Corner. Currently, the merge onto I-495 North brings motorists onto the left side of the Beltway. Motorists traveling to Tysons have to then merge right over four Beltway lanes to exit at Route 7. The new flyover will bring motorists onto the right side of I-495 North into a new auxiliary lane extended to Tysons. Motorists heading to Tysons will be able to stay in that lane all the way to Route 7.

Construction

The I-66 interchange construction will be completed in three phases. In Phase 1, new bridges will be constructed for the I-66 East and West lanes crossing over the Beltway. Phase 2 will entail finishing construction of the I-66 Westbound bridges and building new exit ramps for I-495 South and I-66 East. The final third phase will include construction of a HOT Lanes connection ramp for I-495 South and the new flyover ramp to the I-495 North general purpose lanes.



YOUR INFORMATION RESOURCES

VAmegaprojects.com: Sign up for project updates
511NorthernVirginia.org: Updated travel conditions
Hotline: 1-877-9595-222 E-mail: Info@VAmegaprojects.com
Employer Solutions: employersolutions@vamegaprojects.com

Sign up for
project updates at
VAmegaprojects.com
HOTLINE
1-877-9595-222



I-66 Steel Erection

What's Happening Now:

- Steel placement for the new I-66 eastbound bridge will be done during overnight hours, beginning Thursday, September 10 and continuing for approximately two weeks (weather permitting).
- As with any Beltway HOT Lanes operation, safety is paramount. Beams are lifted by cranes, screwed into place by crews working atop man lifts, and then further secured through heavy duty bolts and brackets. Steel cross frames provide additional security by linking the beams together. Further adjustments to the bolts continue for a period of time once the beams are erected.
- I-495 South at I-66 will be closed at approximately 11 p.m. to ensure the steel beams are safely lifted into place. The I-66 West exit ramp to I-495 south will also be closed. All motorists on I-495 south and I-66 will be detoured to Nutley Street and rerouted to I-495 south.

Traffic Impacts

- To safely accommodate the steel placement at I-66, motorists can expect multiple lane closures and detours between 9:30 p.m. and 5:00 a.m., Monday through Thursday nights, beginning September 10 and continuing for a period of two weeks. Detailed lane closure and detour information can be found at: www.vamegaprojects.com.

Other HOT Lanes Construction Progress

- Other heavy steel and concrete beams have been lifted this summer at Little River Turnpike (Route 236), Arlington Boulevard (Route 50), and Chain Bridge Road (Route 123) to support new bridges being constructed at the Beltway. Steel erection will occur at other interchanges this Fall at Gallows Road (Route 650), Oak Street, Braddock Road (Route 620), and Lee Highway (Route 29). Each steel lift represents a visual reminder of the progress being made to replace more than \$260 million of aging infrastructure along the HOT Lanes corridor.
- Highly visible work has occurred at 10 of the 12 interchanges along the project corridor, with steady progress being made on demolishing old bridges, and building piers and abutments to support new bridges. Several significant traffic shifts and lane closures have taken place to support the interchange bridge construction.
- On the mainline Capital Beltway, crews continue to make room and complete preparatory work to build the new HOT Lanes.

Virginia Megaprojects – a series of large-scale transportation improvements designed to improve traffic flow and provide you with more travel choices in the Northern Virginia region.